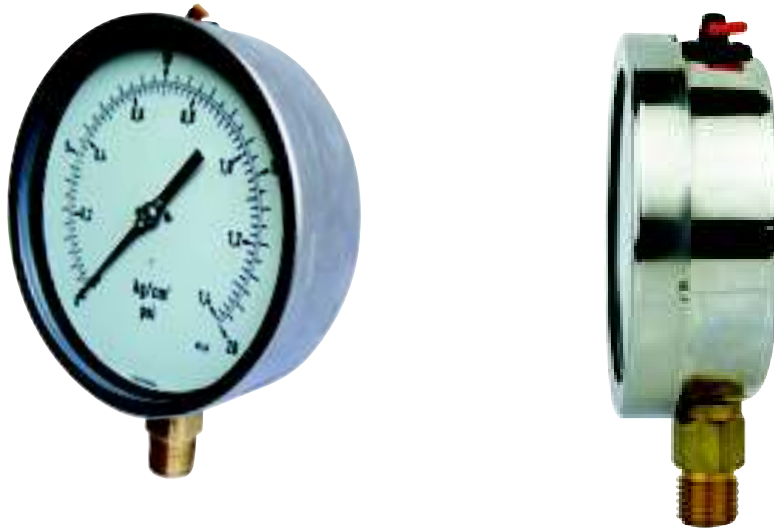


● **LIQUID-FILLED PRESSURE GAUGE**



Model No.	Dial	Form	Flange	Case & Bezel
SHP-02	1.5", 2", 2.5", 3", 4", 6", etc.	Back connection	Front flange	Stainless steel SS304
		Bottom connection	Back flange	
	Bourdon tube	Range	Connection	Accuracy
	Cu-alloy	Normal: 0...0.6bar to 0...1000bar Vacuum: -76cmHg...0 Compound: -76cmHg..0...35bar	1/8", 1/4", 3/8", 1/2" NPT, BSP, BSPT, etc. Brass	±1.0%, ±1.6%, ±2.5%
	Movement	● Scale: bar, psi, kg/cm ² , KPa, MPa, etc.	Liquid Option	
Brass		Glycerin filled or dry with filling hole		