

# FILL-RITE®

The Most Trusted Name in Pumps and Meters

## THE LEGEND CONTINUES DC FUEL TRANSFER PUMPS



Fill-Rite® DC powered pumps provide the flexibility and power to handle even your most difficult applications.

DC power means mobility. Whether you mount the pump on a skid tank, in a truck bed, or install it on a large bulk tank at a remote construction site, a Fill-Rite G-series DC pump delivers high flow and rugged dependability. It also means flexibility since Fill-Rite DC pumps are available in 12 and 24 volt DC models.

Manufactured from only the highest quality materials like cast iron, sintered bronze, powdered iron, and Buna-N seals, these pumps provide exceptional durability, and the ability to pump a wide variety of fuels. Explosion proof motors and UL listed models are your assurance of safety.

Additionally, a complete line of meters and accessories mean you can customize your fuel transfer system to meet your specific needs. From a simple mechanical meter, a hose, and a manual nozzle all the way up to a digital pulse output meter and ultra high flow automatic nozzle, nothing beats Fill-Rite fuel transfer equipment.



## FEATURES

- **Cast Iron Housing Construction**
- **UL/cUL Certified Motor (exception FR1614)**
- **30 Minute Duty Cycle**
- **Gasoline, Diesel, B20,E-15, and Kerosene, Compatible**

PROUDLY  
Made in  
USA

# FILL-RITE® MOBILE DC FUEL TRANSFER PUMPS



SD1202G

## SD1200 Series

- For In-Bed Truck and Small Mobile Tanks
- Great Emergency Pump

Flow Rate (GPM/LPM)	Up to 13/49
Voltage	12 Volt
Inlet/Outlet	1"/3/4"
Horse Power	1/4
Amps	20

Included Accessories

<b>SD1202G</b>	15 1/4" - 43 1/4" PVC Two Piece Suction Pipe, 3/4" x 10' Hose, 3/4" Manual Nozzle [For 3/4" Automatic Nozzle order SD1202GA]
----------------	------------------------------------------------------------------------------------------------------------------------------

## FR1600 Series

- Extremely Portable
- Diesel Only
- For Drums and Totes

FR1614

Up to 10/38

12 Volt

3/4" / 3/4"

1/4

20

8' PVC Suction Hose, 3/4" x 8' Hose, 3/4" Manual Poly Nozzle [For Pump Only order FR1612]

## FR2400 Series · Heavy Duty

15 GPM

24 Volt

- For 24 Volt Battery Applications
- For Mobile Tanks used in Farming and Construction

FR2410G

Up to 15/57

24 Volt

1"/3/4"

1/4

10

20 - 34 3/4" Steel Telescoping Suction Pipe, 3/4" x 12' Hose, 3/4" Manual Nozzle

FR2411GL

Up to 15/57

24 Volt

1"/3/4"

1/4

10

20 - 34 3/4" Steel Telescoping Suction Pipe, 3/4" x 12' Hose, 3/4" Manual Nozzle, Mechanical Meter [L]



FR1210GA

## FR1200 Series · Heavy Duty

15 GPM

12 Volt

- 8' Lift
- For In-Bed Truck Tanks
- For Mobile Tanks used in Farming and Construction
- Great Emergency Response Pump

Flow Rate (GPM/LPM)	Up to 15/57
Inlet/Outlet	1"/3/4"
Horse Power	1/4
Amps	20

Included Accessories

FR1204

Up to 15/57

1"/3/4"

1/4

20

Pump Only

FR1210G

Up to 15/57

1"/3/4"

1/4

20

20 - 34 3/4" Steel Telescoping Suction Pipe, 3/4" x 12' Hose, 3/4" Manual Nozzle

FR1210GA

Up to 15/57

1"/3/4"

1/4

20

20 - 34 3/4" Steel Telescoping Suction Pipe, 3/4" x 12' Hose, 3/4" Auto Noz

FR1211G

Up to 15/57

1"/3/4"

1/4

20

20 - 34 3/4" Steel Telescoping Suction Pipe, 3/4" x 12' Hose, 3/4" Manual Nozzle, Mechanical Meter [Gal]

FR1211GL

Up to 15/57

1"/3/4"

1/4

20

20 - 34 3/4" Steel Telescoping Suction Pipe, 3/4" x 12' Hose, 3/4" Manual Nozzle, Mechanical Meter [L]



FR4210G

## FR4200 Series · Heavy Duty

20 GPM

12 Volt

- 25% Higher Flow
- For In-Bed Truck Tanks and Mobile Tanks
- Great Emergency Response Pump
- 8' Lift

Flow Rate (GPM/LPM)	Up to 20/75
Inlet/Outlet	1"/1"
Horse Power	1/4
Amps	19

Included Accessories

FR4204G

Up to 20/75

1"/1"

1/4

19

Pump Only

FR4210G

Up to 20/75

1"/1"

1/4

19

20 - 34 3/4" Steel Telescoping Suction Pipe, 1" x 12' Hose,

FR4211G

Up to 20/75

1"/1"

1/4

19

20 - 34 3/4" Steel Telescoping Suction Pipe, 1" x 12' Hose, 1" Manual Nozzle, Mechanical Meter

## FR3200 Series · Heavy Duty

25 GPM

12 Volt

- Highest Flow DC Pump in the Industry
- For Remote Fueling of Large Ag and Construction Equipment

Up to 25/95

1"/1 1/4"

1/2

50

Pump Only

FR3204

Up to 25/95

1"/1 1/4"

1/2

50

1" Ultra High Flow Auto Nozzle, 1" x 18' Hose



8825 Aviation Drive  
Fort Wayne, Indiana 46809  
P (800) 634-2695 or (260) 747-7524  
F (800) 866-4861

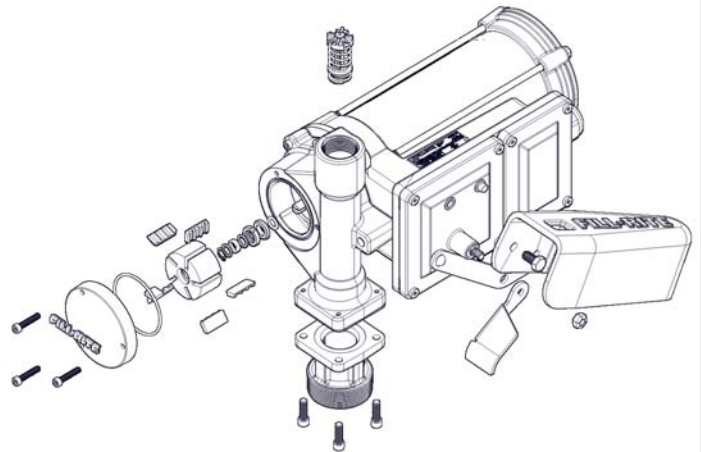
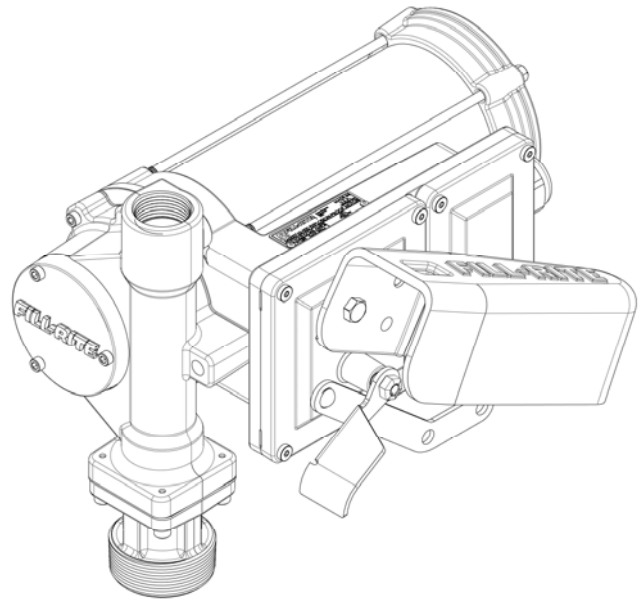


**FILLRITE.COM**

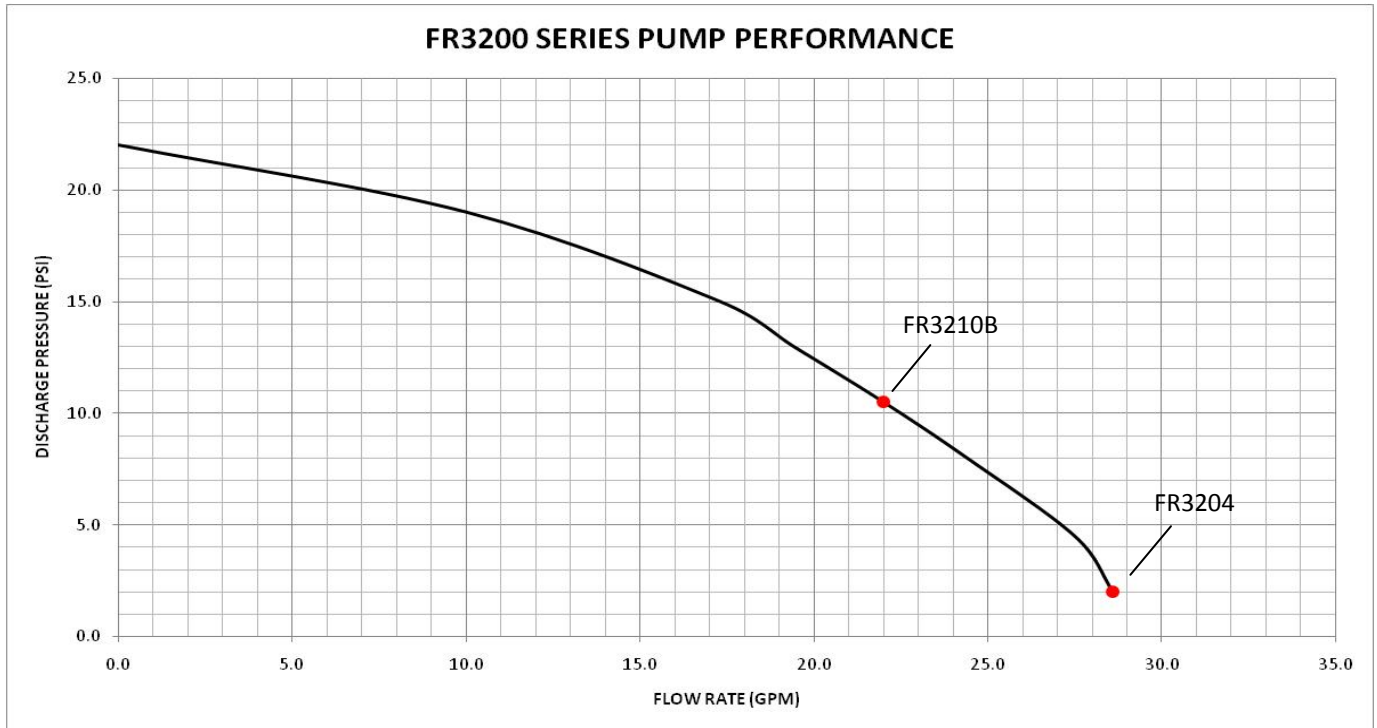
## FR3210 Series Hi-Flow DC Pump S & E Data Sheet

### Technical Information

Motor	
Power -AC 115, 230, 115/230	N/A
HZ 50, 60, 50/60	N/A
Power - DC 12, 24, 12/24	12 VOLT
HP (horsepower) rating	1/2 HP
Power cord length	20'
Power cord gauge	10 AWG
Power cord DC battery connectors	N/A
Amps (FLA)	45 A
RPM	3600
Duty cycle	30 min.
Thermal protection switch	Yes
Circuit protection fuse	Yes (Circuit Breaker)
Certification	UL/cUL Motor
Pump	
Type- rotary, diaphragm, gear, vane	Rotary Vane
GPM in supplied configuration	22.5
GPM open flow - no hose or nozzle	25
By-pass pressure rating (psi) - Max	22 psi
Dry vac (in Hg)	12
Head- Max (ft)	50.8
Anti-siphon valve	None
Inlet - Size / Thread	1-1/4" NPT
Outlet – Size / Thread	1" NPT
Mount	Bung (NPT)
Materials of construction -pump housing	Cast Iron
Materials of construction- wetted material	BUNA
Rotor materials of construction	Powdered Iron
Rotor vane material of construction	Acetal
Compatible fluids	Diesel, gasoline, Bio Diesel
Strainer Mesh Size	20 x 20
Warranty (yr)	2 Years



## Performance Chart



## Repair Kits

Kit Number	Description	Parts
KIT320RK	Overhaul Kit	Rotor, rotor cover, vanes, O-ring seal, shaft seal kit, bypass valve, inlet seal & screen, rotor key, attaching hardware
KIT320RG	Rotor & Vane Kit	Rotor cover, rotor, vanes, rotor key, O-ring seal, attaching hardware
KIT320SL	Seal Kit	O-ring, shaft seals, retainer clip
KIT320BV	By-Pass Service Kit	Inlet gasket, screen, bypass valve, valve spring, valve retainer
KIT120NB	Nozzle Boot Kit	Nozzle boot, attaching hardware
KIT320SK	External Seal Kit	O-ring seal, inlet gasket, electrical cover seals
KIT320BG	Inlet Flange Kit	Inlet flange (bung), attaching hardware, inlet seal, screen
KIT320SW	Switch / Breaker Kit	Breaker / switch assembly, switch mounting bracket, attaching hardware, cover gasket
KIT320MK	Motor Kit	Complete motor assembly

## Accessories

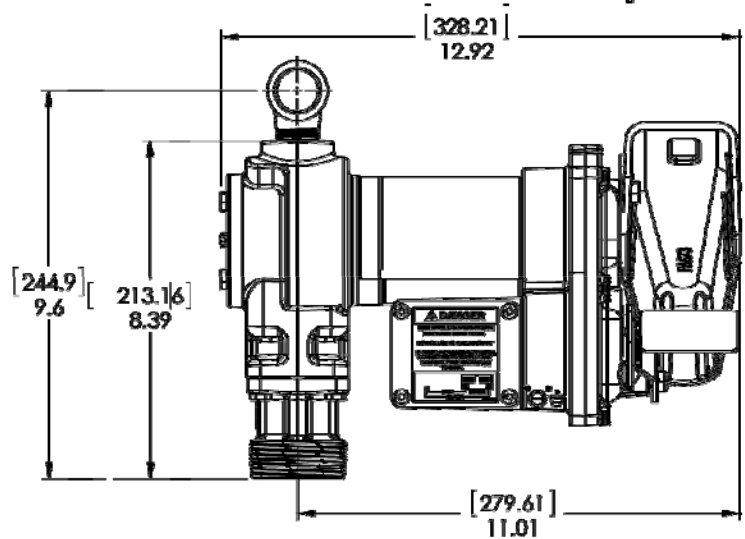
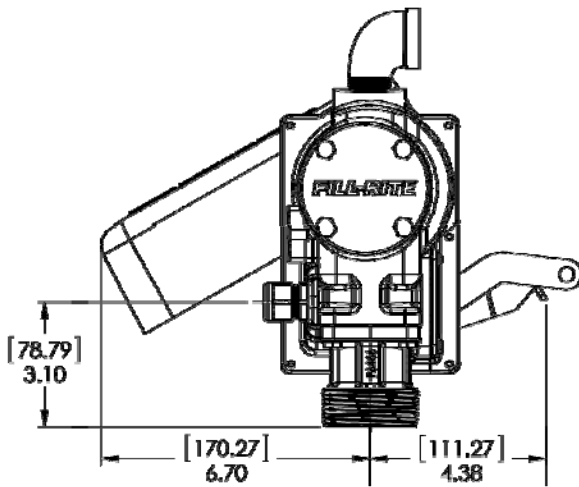
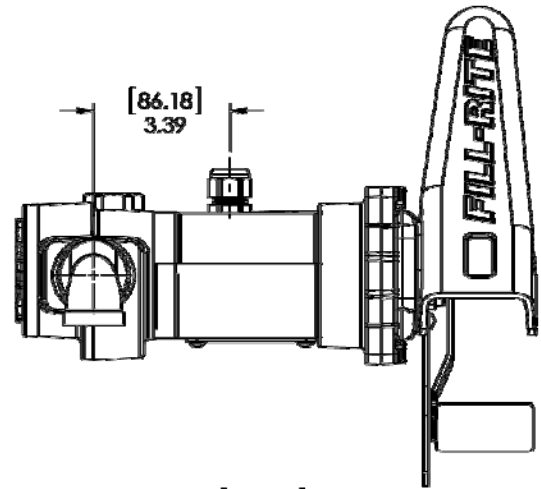
Accessory	Description
N100DAU13	1" Ultra High Flow Manual Nozzle
FRHMN100S	1" Manual Nozzle
900D	900D Digital Meter
NEW	900D Digital Meter with Pulsar <b>(Coming Soon)</b>
FRH10020	20' x 1" Static Discharge Hose
FRH10012	12' x 1" Static Discharge Hose
NEW	1" multi plane swivel <b>(Coming Soon)</b>

# FILL-RITE® FR1200G\* Technical Specifications

The Most Trusted Name in Pumps and Meters



FR1200G Series



Pump	
Type- rotary, diaphragm, gear, vane	Rotary Vane
GPM in supplied configuration	Up to 15
GPM open flow - no hose or nozzle	Up to 18.5
By-pass pressure rating (psi) - Max	16 psi
Dry vac (in Hg)	5
Head- Max (Ft.)	37
Anti-siphon valve	None
Inlet - Size / Thread	1" NPT   1" BSPP**
Outlet - Size / Thread	3/4" NPT   3/4" BSPP**
Mount	2" Bung NPT   2" BSPP**
Material -pump housing	Cast Iron
Material- wetted material	BUNA-N
Rotor material	Powdered Iron
Rotor vane material	Sintered Bronze
Compatible fluids	Diesel, gasoline, BioDiesel up to B20, E15, Kerosene
Strainer Mesh Size	20 x 20
Warranty	2 Years

Motor	
Power - AC 115, 230, 115/230 VAC	N/A
HZ 50, 60, 50/60	N/A
Power - DC 12, 24, 12/24	12
HP (horsepower) rating	1/4 HP
Power cord length (feet)	18'
Power cord gauge (AWG)	12 AWG
DC Power cord connectors	NONE
Amps (FLA)	20
RPM	2600
Duty cycle	30 min.
Thermal protection switch	Yes
Circuit protection fuse	NONE
Certification	UL, cUL Motor, ATEX, CE**, ANZEx

**\*1200G Series pumps models:**

FR1204G, FR1210G, FR1211G, FR1205GE\*\*, FR1211GEL\*\*, FR1211GELA\*\*, FR1210GE\*\*, FR1210GEA\*\*

\*\* "E" models are CE Certified for use in Europe.

\*\*\* Specification will vary with specific model chosen.



**Tuthill Corporation**  
8825 Aviation Drive  
Fort Wayne, IN 46809  
(800) 634-2695  
www.tuthill.com

## Performance Data



## Service Kit Information

Kit	Description	Parts
KIT120BD	BioDiesel Kit	O-ring seal, bypass valve poppet, bypass cap seal, inlet seal
KIT120RG	Rotor & Vane Kit	Rotor cover, rotor, vanes, rotor key, O-ring seal, attaching hardware
KIT120JC	Junction Cover Kit	Junction cover, seal
KIT120SL	Seal Kit	O-ring, shaft seals, retainer clip
KIT120BV	By-Pass Service Kit	Screen, bypass valve, valve spring, bypass cap. O-ring seal
KIT120NB	Nozzle Boot Kit	Nozzle boot, attaching hardware
KIT120BG	Inlet Flange Kit	Inlet flange (bung), attaching hardware, inlet seal, screen
KIT120SG	Inlet Gasket and Screen	Gasket for inlet (bung) and screen
KIT120SW	Switch Lever Kit	Switch lever, mounting hardware

### Accessories

Suction pipe material	N/A
Suction pipe length- extended/not extended	None
Nozzle- size	N/A***
Nozzle- manual / automatic	N/A***
Hose liquid materials compatibility	Oil, Gasoline, Diesel***
Hose diameter	3/4"***
Hose length	N/A***
Hose static wire (Y/N)	N/A***

### Logistics

UPC	0-89404-17578-1***
Length	15.5"
Width	10"
Height	6.5"

#### \*1200G Series pumps models:

FR1204G, FR1210G, FR1211G,  
FR1205GE\*\*, FR1211GEL\*\*,  
FR1211GELA\*\*, FR1210GE\*\*,  
FR1210GEA\*\*

\*\* "E" models are CE Certified for use in Europe.

\*\*\* Specification will vary with specific model chosen.

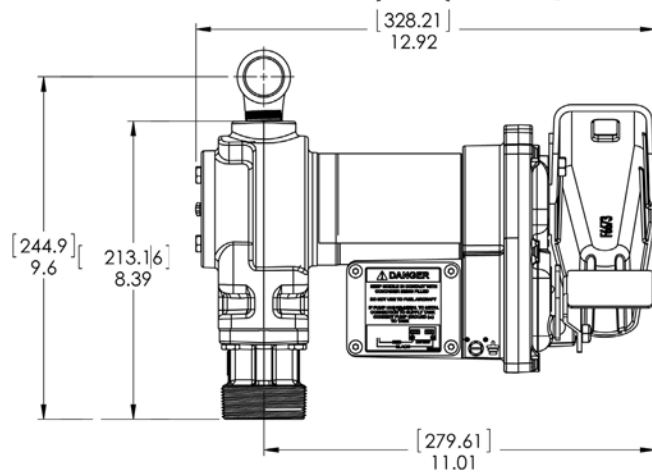
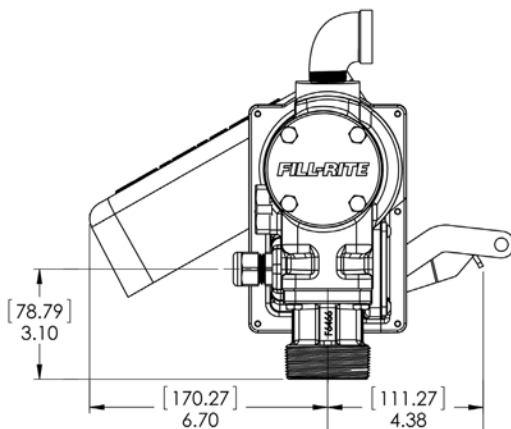
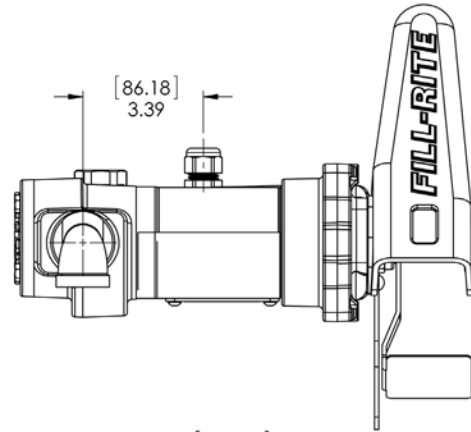


**Tuthill Corporation**  
8825 Aviation Drive  
Fort Wayne, IN 46809  
(800) 634-2695  
www.tuthill.com

# FILL-RITE®

The Most Trusted Name in Pumps and Meters

## FR610G Series Technical Specifications

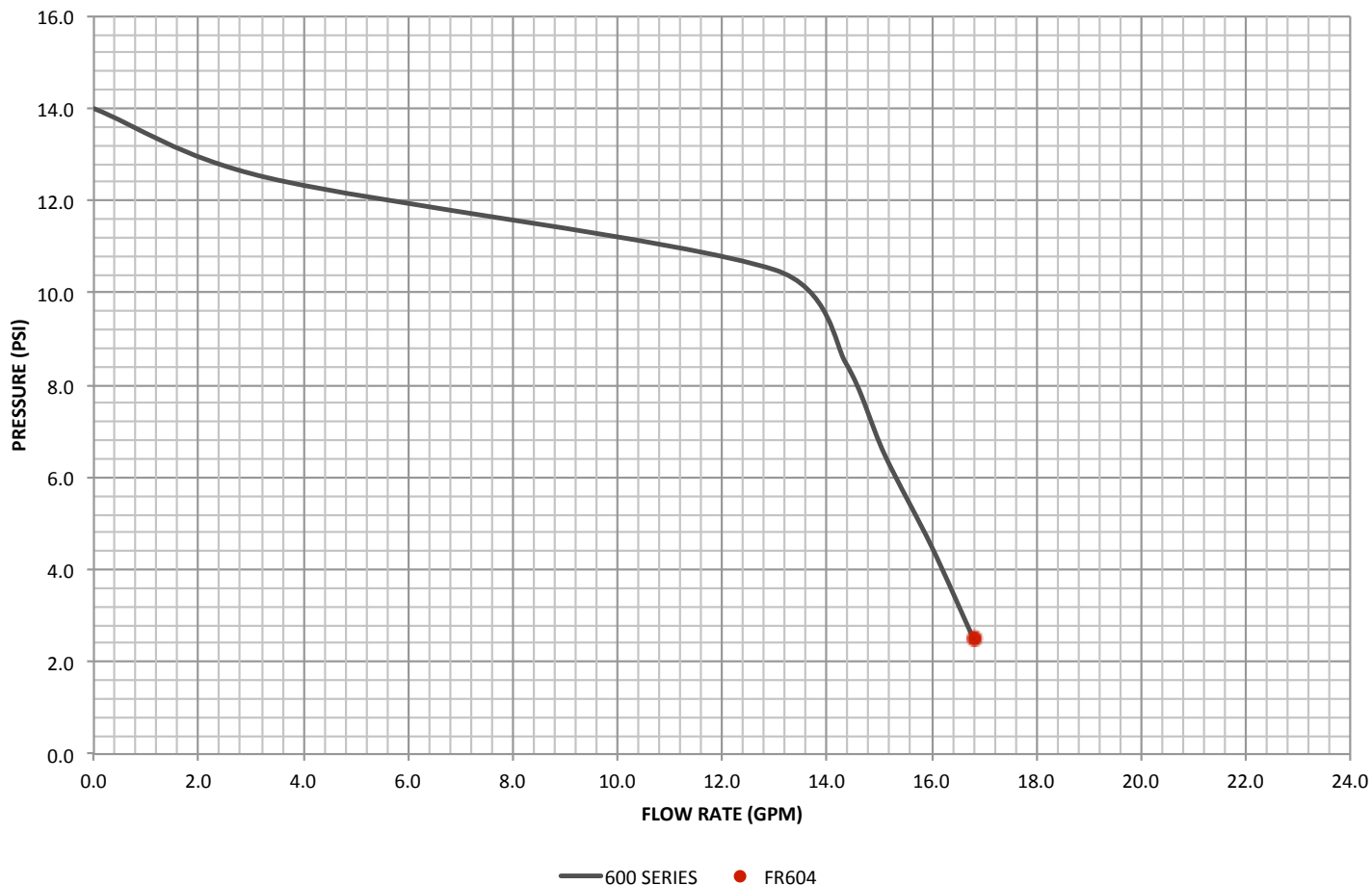


Pump		Motor	
Type - Rotary, Diaphragm, Gear, Vane	Rotary Vane	Power - AC 115,230, 115/230	115
GPM in Supplied Configuration	14.8	HZ 50,60,50/60	60
GPM Open Flow - no Hose or Nozzle	17.4	Power - DC 12, 24, 12/24	N/A
By-Pass Pressure Rating (PSI) - Max	16 PSI	HP (Horsepower) Rating	1/6 HP
Dry Vac (in Hg)	5	Power Cord Length (feet)	N/A
Head - Max (Ft.)	36.96	Power Cord Gauge (AWG)	N/A
Anti-Siphon Valve	None	DC Power Cord Connectors	None
Inlet - Size / Thread	1"	Amps (FLA)	2.0
Outlet - Size / Thread	NPT	RPM	2000
Mount	Bung	Duty Cycle	30 min.
Material - Pump Housing	Cast Iron	Thermal Protection Switch	Yes
Material - Wetted Material	Buna	Circuit Protection Fuse	None
Rotor Material	Powdered Iron	Certification	UL, cUL
Rotor Vane Material	Bronze		
Compatible Fluids	Diesel, Gasoline, BioDiesel up to B20		
Strainer Mesh Size	20 X 20		
Warranty	2 Years		



Excellence at work. Excellence in life.

## 600 SERIES PERFORMANCE CURVE



### SERVICE KIT INFORMATION

Kit	Description	Parts
KIT120BD	BioDiesel Kit	O-ring seal, bypass valve poppet, bypass cap seal, inlet seal
KIT120RG	Rotor & Vane Kit	Rotor cover, rotor, vanes, rotor key, O-ring seal, attaching hardware
KIT120JC	Junction Cover Kit	Junction cover, seal
KIT120SL	Seal Kit	O-ring, shaft seals, retainer clip
KIT120BV	By-Pass Service Kit	Screen, bypass valve, valve spring, bypass cap, O-ring seal
KIT120NB	Nozzle Boot Kit	Nozzle boot, attaching hardware
KIT120BG	Inlet Flange Kit	Inlet flange (bung), attaching hardware, inlet seal, screen
KIT120SG	Inlet Gasket & Screen	Gasket for inlet (bung) and screen
KIT120SW	Switch Lever Kit	Switch lever, mounting hardware

Accessories	
Suction pipe material	Steel
Suction pipe length - extended/notextended	40.5 / 23
Nozzle - size	3/4"
Nozzle - Manual / Automatic	Manual
Hose liquid materials compatibility	Black Nitrile Rubber
Hose diameter	3/4"
Hose length	12'
Hose static wire (Y/N)	Yes

Logistics	
UPC	0-89404-22324-6
Freight Class of Product (Number Only)	85
Length	17
Width	15
Height	15

The Most Trusted Name in Pumps and Meters

Motor	
Power -AC 115, 230, 115/230	115
HZ 50, 60, 50/60	60
Power - DC 12, 24, 12/24	None
HP (horsepower) rating	1/3
Power cord length	None
Power cord gauge	None
Power cord DC battery connectors	None
Amps (FLA)	5.5
RPM	1725
Duty cycle	30 min.
Thermal protection switch	Y
Circuit protection fuse	NONE
Certification	UL, cUL
Pump	
Type- rotary, diaphragm, gear, vane	Rotary Vane
GPM in supplied configuration	18.9
GPM open flow - no hose or nozzle	21
By-pass pressure rating (psi) - Max	23
Dry vac (in Hg)	12
Head- Max	53.13
Anti-siphon valve	Anti-siphon Ready
Inlet - Size / Thread	1 ¼"
Outlet – Size / Thread	NPT
Mount	Bung (NPT)
Materials of construction -pump housing	Cast Iron
Materials of construction- wetted material	Buna
Rotor materials of construction	80% Iron/20% Copper
Rotor vane material of construction	Carbon
Compatible fluids	Diesel, Gasoline, Bio-Diesel up to B20, E15, Kerosene
Strainer mesh size	40 x 40 x .010"
Warranty (yr)	2 Years
Accessories	
Suction pipe material	None
Suction pipe length- extended/not extended	None
Nozzle- size	1"
Nozzle- manual / automatic	Auto, Ultra Hi-Flow
Hose liquid materials compatibility	Black Nitrile Rubber
Hose diameter	1"
Hose length	18'
Hose static wire (Y/N)	Y
Logistics	
UPC	89404214404
Length	20
Width	21.25
Height	17.5



**FR711VA**

SKU/Kit #'s	Small Pump Kits	Consists of
KIT700BD	Bio-Diesel	Special Shaft Seal Assembly, Gasket, Inlet Gasket, Bypass O-ring
KIT700BV	Bypass	Poppet, Spring, O-ring, Cap
KIT700CV	Check Valve	Bypass Valve, Ring, Gaskets, Spring, Check Valve Body
KIT700SL	Shaft Seal	8 Piece Assembly
KIT700RG	Rotary Group	Rotor, 8 Vanes, Rotor Key, Gasket, Rotor Cover, 4 Screws
KIT700BG	Inlet	Inlet, 4 Screws, J-Box Cover, Label, Gasket, 4 Screws
KIT700OT	Screen & Gasket	Screen, Gasket
KIT700RG	Nozzle Boot	Nozzle Boot, 2 Screws, (Small Pumps and 700 Series Pumps)
KIT700SG	Screen & Gasket	Strainer, Gasket, Strainer Cover
KIT700SW	Switch Lever	Switch Lever, Nut

